



# Simplicité®

## Version 2.6.1 release note

### TABLE OF CONTENTS

<b>1</b>	<b>ABSTRACT .....</b>	<b>3</b>
<b>2</b>	<b>MAJOR FEATURES .....</b>	<b>4</b>
<b>2.1</b>	<b>INCLUDED IN PATCH LEVEL 1.....</b>	<b>4</b>
2.1.1	OVERRIDE FIELD PROPERTIES IN OBJECTFIELD.....	4
2.1.2	CLIENT LIBRARY .....	4
<b>2.2</b>	<b>INCLUDED IN PATCH LEVEL 2.....</b>	<b>5</b>
2.2.1	GENERIC USER INTERFACE OF SIMPLE DOCUMENT FIELD .....	5
2.2.2	GENERIC ADAPTERS.....	5
2.2.3	CSV IMPORT UPGRADE.....	6
<b>2.3</b>	<b>INCLUDED IN PATCH LEVEL 3.....</b>	<b>6</b>
2.3.1	EXTENDED ROW_ID .....	6
2.3.2	REGISTER SERVICES ON THE PUBLIC PAGE.....	7
2.3.3	APPLET DIAGRAM MODELER .....	8
<b>3</b>	<b>MINOR FEATURES .....</b>	<b>9</b>
<b>3.1</b>	<b>INCLUDED IN PATCH LEVEL 1.....</b>	<b>9</b>
3.1.1	GET SPECIFIED FIELD AREA METHOD.....	9
3.1.2	CUSTOM LOCATION OF ACTION BUTTONS IN FORM TEMPLATES .....	9
3.1.3	OBJECT ICONS .....	9
3.1.4	OBJECTFIELD SETVALUE .....	9
3.1.5	RELOCATED PLATFORM SERVLETS.....	9
3.1.6	UNSET SESSION SYSTEM PARAMETER.....	10
<b>3.2</b>	<b>INCLUDED IN PATCH LEVEL 2.....</b>	<b>10</b>
3.2.1	OBJECT FORM REFACTORED .....	10
3.2.2	ADDED HOOKS TO DYNAMICALLY ALLOW CREATE ACTIONS .....	10
3.2.3	ADDED GRANT CLASS IN ADOBE FLEX(R) LIBRARY AND RENAMED PACKAGE NAME.....	10

---

<b>3.3 INCLUDED IN PATCH LEVEL 3.....</b>	<b>11</b>
3.3.1 ADDITIONAL FIELD STYLE SYNTAX .....	11
3.3.2 SPECIFIC QUERIES APIS WITH INTEGER RESULT .....	11
3.3.3 SET STYLE ON VALUE ARRAY FOR LIST CONTEXTS.....	11
3.3.4 MAP TAG IN FORM TEMPLATES.....	11
3.3.5 SPECIFIC SQL ADDITIONAL FILTER ON FIELDS.....	11
3.3.6 EXTERNAL FILE ADAPTERS .....	11
3.3.7 WEB ZONES AS HOME PAGE COMPONENT.....	11
3.3.8 INTERNAL SOAP ACCESS .....	12
3.3.9 REFERENCE FIELD FOR PARENT OBJECT CONTEXT.....	12
<b><u>4 MAJOR BUG FIXES .....</u></b>	<b>13</b>
<b>4.1 INCLUDED IN PATCH LEVEL 1.....</b>	<b>13</b>
4.1.1 DOCUMENT DELETION.....	13
4.1.2 EMAIL ADDRESSES EMPTINESS CHECKS .....	13
4.1.3 LOG EVENT RELOADING AND ENABLED FLAG .....	13
<b>4.2 INCLUDED IN PATCH LEVEL 2.....</b>	<b>13</b>
4.2.1 TOP RAILWAY REFRESH .....	13
4.2.2 REFERRED FIELD IN SEARCH FILTERS IN JSON/XSD .....	13
4.2.3 JAVA CUSTOM ACTIONS IN PANELS OF GENERIC WEB UI.....	13
4.2.4 CARTESIAN PRODUCT IN GROUP CACHE LOADING .....	13
<b>4.3 INCLUDED IN PATCH LEVEL 3.....</b>	<b>13</b>
4.3.1 LINK TO SELECT BOX IN SEARCH PAGES .....	13
4.3.2 RESET SEARCH ORDERS IN SEARCH PAGES.....	13
4.3.3 LINK MAPPING NOT APPLIED AFTER PAGINATION IN SELECT POPUPS.....	13
4.3.4 AUTO SELECTION AFTER PAGINATION IN SELECT POPUPS .....	14

## 1 Abstract

This document is a summary of all new features added to version 2.6.1 and finally repackaged as version 2.6.2.

## 2 Major features

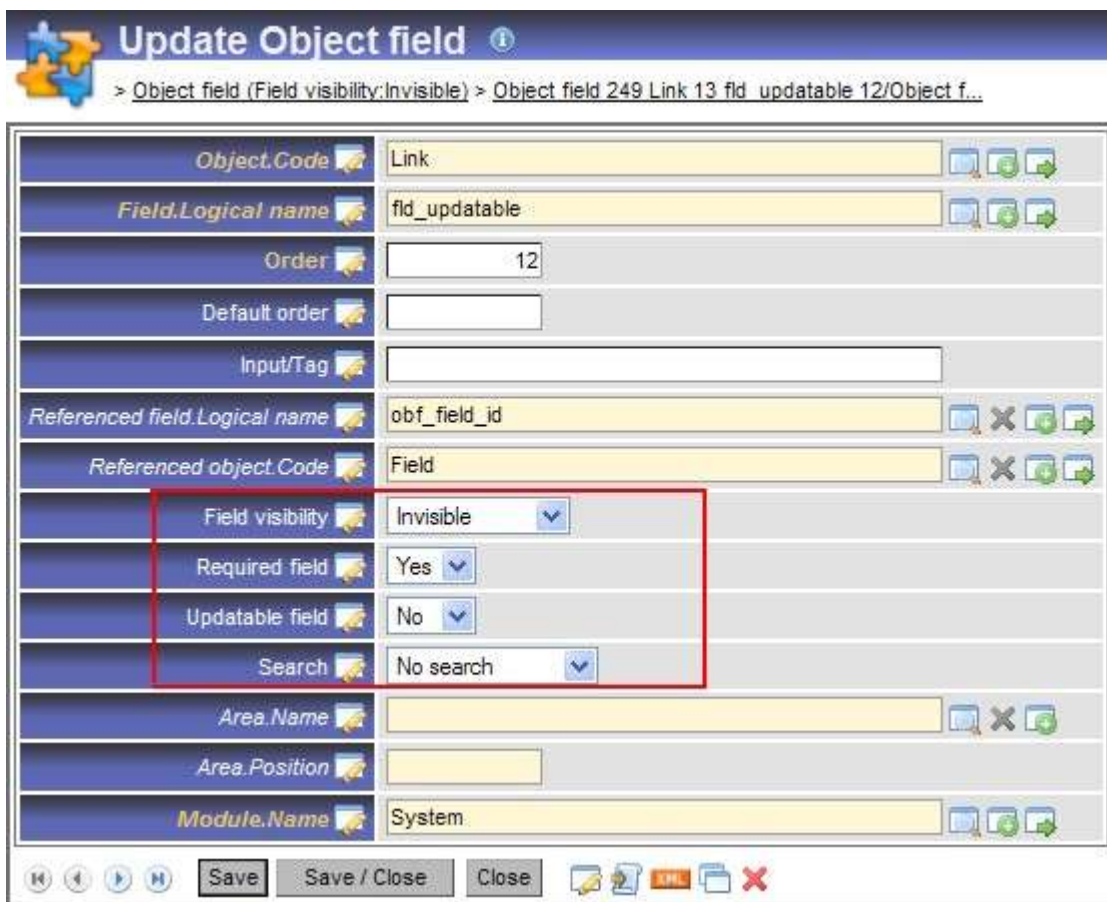
### 2.1 Included in patch level 1

#### 2.1.1 Override Field properties in ObjectField

4 properties have been added to the Object Field definition:

- Visibility
- Required
- Updatable
- Search

If they are not set, the Field properties are applied to the object, otherwise those properties override the default Field properties.



#### 2.1.2 Client library

A new Simplicité(R) library is now provided for external Java clients usage: `clientSimplicite-x.y.z.jar`

It contains the subset of the global library `libSimplicite-x.y.z.jar` that are actually used on client side.

Using Simplicité(R) clients usage also requires few third party libraries that are now designated in the `build-core.properties` files (`thirdparty.libs.client` property).

Launching an external client requires **both** the Simplicité(R) client lib and these third party libraries in the CLASSPATH.

*NB: The standard Apache ANT(R) scripts have been modified accordingly.*

## 2.2 Included in patch level 2

### 2.2.1 Generic User Interface of simple document field

The UI of simple document field (not linked with a bookshelf) has been released to allow the upload of files in only one "save" operation.

This change allows the creation of objects with simple Document fields, in only one step (the bookshelf document popup is not used).



The available actions are:

- Open: open the document in a separated window
- Erase: clear the document, the physical file will be deleted after the "save" action
- Edit: open a file input zone to choose the local file to upload during the "save" action

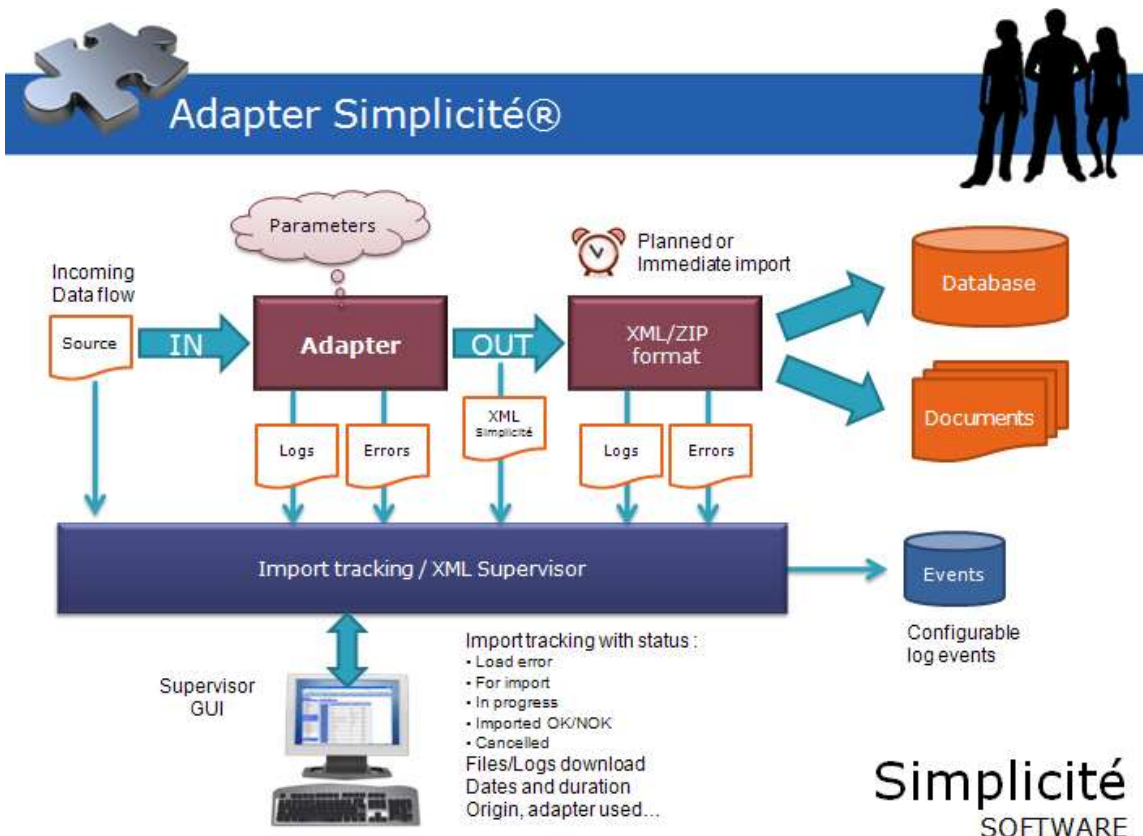
Those actions are displayed with icons, activated regarding the form context (read-only, required).

Here is one example of the new APIs to set a document to a field:

```
File f = new File(Grant.getAdmin().getImportDir()+"/user1.png");
byte[] b = Tool.getBytes(new FileInputStream(f));
DocumentDB img = new DocumentDB(null, f.getAbsolutePath(), b, "User",
"usr_image_id", null);
user.getField("usr_image_id").setDocument(img);
user.save();
```

### 2.2.2 Generic Adapters

Adapter interface has been released to allow any incoming data to be converted in a standard XML Simplicité flow.



Regarding the import complexity, choose the best way to integrate the data:

- **AWK Adapter:** to use only in a very simple import
  - `stdin` contains the incoming flow
  - `stdout` will contain the XML outgoing flow
  - `stderr` will append the error/reject from source
  - no generic logger writer can be used
- **BSH Adapter:** the scripted BSH will use more variables than AWK
  - `in`: the opened incoming flow
  - `out`: the XML output `PrintWriter`
  - `err`: the error/reject `PrintWriter`
  - `log`: the logger `PrintWriter`
  - `grant`: the user/client rights
  - any other Adapter parameter: for example the `OBJECT_NAME` in a CSV import
  - `status`: the BSH script can set a return status (used by the XML Supervisor)
- **Java Adapter:** the best way to build and debug a complex import
  - with the native `SimpleAdapter`: contains API to simplify the developments
  - with the `LineBasedAdapter`: implements only the `processLine`
  - or implements the Adapter interface: `init`, `preProcess`, `process`, `postProcess`, `close`

The related XML Supervisor (XML import tracking) has now 4 document fields:

- `xsp_src_id`: the original incoming document, i.e. the original file or the generate file with the input flow.
- `xsp_xml_id`: the adapted Simplicite XML document, optional when no Adapter is used or when the Adapter imports directly the data into the DB.
- `xsp_log_id`: the global logs with 5 new Events to manage the import trace levels (Fatal to Debug named `xCOREIOxxx`).
- `xsp_err_id`: the specific error/reject file, it will contain any errors or rejects of the Adapter/Import process.

### 2.2.3 CSV Import upgrade

This import has been released to use the generic Adapter interface `CSVAdapter` to allow more flexibility:

- `OBJECT_NAME`: required, the target object name
- `ADAPTER_MODE`: optional, indirect or direct, "indirect" mode (default) builds one XML file, "direct" mode imports the data directly (faster)
- `SEPARATOR`: optional, the CSV separator character (default value is ';')
- `EXT_DOCDIR`: optional, the external document root directory, field value contains the relative path of documents to import
- `COMMENT_SYMBOL`: optional, line comment symbol (default is #)
- `NEW_LINE`: optional, new line symbol (default is `%NEWLINE%`)
- `EFFECTIVE_DATE`: optional, to plan the effective date of import
- `CLEAR_CACHE`: optional, to clean the system cache before/after/both the import

The generated Log file contains the Adapter process status for each line, and the XML import logs (in indirect mode).

The error file contains all the rejected lines for any further usage.

## 2.3 Included in patch level 3

### 2.3.1 Extended `row_id`

This new property `Id field` has been added to the Object configuration to override the default `row_id` field:

- First, create a new key field (ex: `MyOrderKey` as a Text field, visible, mandatory and functional key, and physical column sets to `order_num`)

- Create a new object and select the `Id` field, this key can be a functional key or not, visible or not, etc.
- Use APIs to access the new object `row_id`: `getRowId`, `setRowId` (the overridden `row_id` is the first object field)

### 2.3.2 Register services on the public page

A simple workflow manages:

- the registration form
- send emails to administrators to activate or reject the user account, and a confirmation email to the sender
- create a new `Pending User` with the requested responsibilities

Administrator can activate the User, he will receive a notification (common Alert)

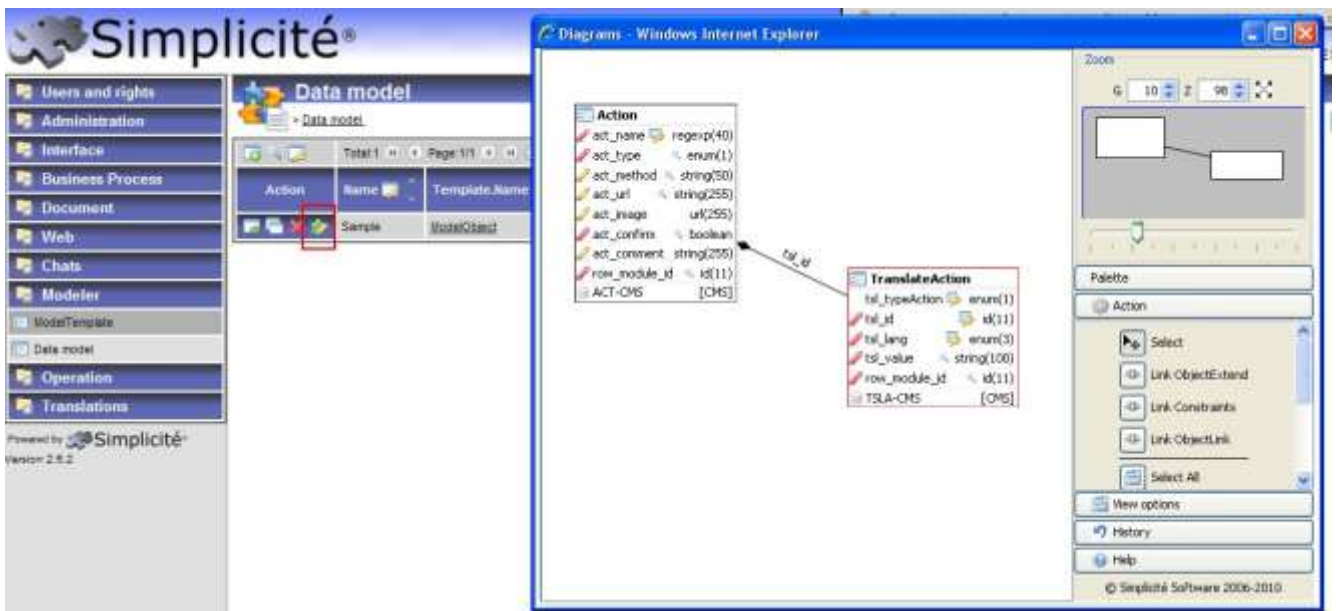
A service is a common `Group` to grant some functions, translated in the list of values `TEXT`, with its type sets to "Service to register":

### 2.3.3 Applet Diagram Modeler

It is now possible to edit models directly in the common Web UI. The designer must first configure the `java.policy` to grant `Simplicité Applet`.

```
grant SignedBy "Simplicite-Software" {
    permission java.io.FilePermission "${user.home}${/}-", "read";
    permission java.io.FilePermission "${user.home}${/}.simplicite",
    "read,write,delete";
    permission java.io.FilePermission "${user.home}${/}.simplicite${/}-",
    "read,write,delete";
    permission java.util.PropertyPermission "user.home", "read";
    permission java.util.PropertyPermission "user.dir", "read";
    permission java.awt.AWTPermission "accessClipboard";
    permission java.awt.AWTPermission "listenToAllAWTEvents";
    permission java.lang.RuntimePermission "modifyThread";
};
```

Open model with the puzzle icon, the Applet is a subset of the Plugin Editor:





## 3 Minor features

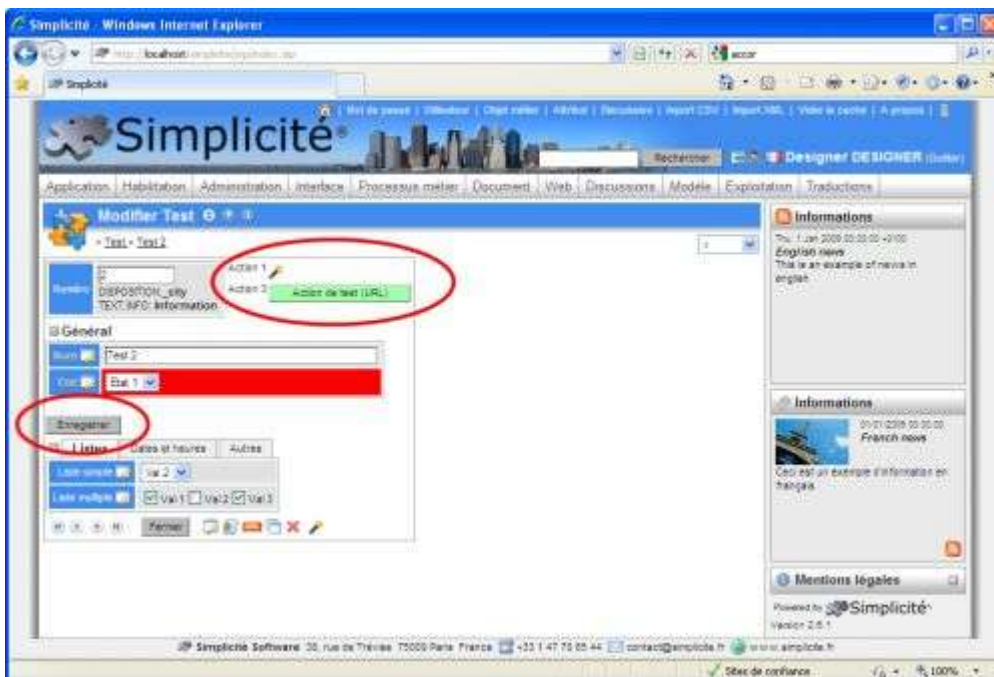
### 3.1 Included in patch level 1

#### 3.1.1 Get specified field area method

The `getFieldArea(int position)` has been added to `com.simplicite.util.ObjectCore` to allow direct access to field area for specified position.

#### 3.1.2 Custom location of action buttons in form templates

It is now possible to locate action button anywhere in a form template using the following tag syntax: `[ACTION:<action name>]`, it is also possible to do the same with the save and save+close buttons using `[SAVE]` and `[SAVECLOSE]` tags.



*NB: at that stage it is not possible to do the same with the close button.*

#### 3.1.3 Object icons

It is now possible to a certain extent, to choose a dedicated icon for business objects. At that stage, the choice has to be made among the predefined `HTMLPage.ICON_*` constants using the `ObjectCore.set/getIconCode()` APIs and the only usage of this settings is in the generic web UI, at the page title level (search, list, form and select pages).

#### 3.1.4 ObjectField setValue

The `ObjectField.setValue` method has been added to support many native types: Date, int, float, double and boolean.

Some extra native type value getters (with default values to handle the cases where the value is `null`) have been also added to `ObjectField` class

#### 3.1.5 Relocated platform servlets

To avoid some mess in the public APIs packages all platform servlets (that used to be located in various packages) have been relocated into the `com.simplicite.util.servlets` package

### 3.1.6 Unset session system parameter

It is now possible to remove a session system parameter using the `GrantCore.unsetParameter(String name)` API

## 3.2 Included in patch level 2

### 3.2.1 Object form refactored

The generic object form displays the selection in only one HTML `<form>`, using the hidden input named `action`.

Any action button posts now the form with the entered data.

The action values to open a object form are:

- `new`: open the form in a creation context
- `copy`: open the form in a copy context of one another record
- `update`: open the form in a update context
- `delete`: open the form to confirm the requested deletion

The action values to post a object form are:

- `save`: action to save (create or update) the form data
- `saveclose`: action to save (create or update) and close the form data
- `close`: action to close the form
- `confirm`: action to confirm the deletion
- `custom`: call a specific `Action` joined with the hidden input `actName` which contains the action name

The action values to navigate between records are:

- `first`: return to the first record of the current page search
- `back`: return to the prior record of the current page search
- `next`: go to the next record of the current page search
- `last`: go to the last record of the current page search

When the user clicks on a specific `Action` (added buttons or icons), the form is first saved before the action method call.

If the call returns something (message or error), the form displays a message on its top.

Otherwise, if the Action URL is set in configuration, the form will be redirected to that location.

### 3.2.2 Added hooks to dynamically allow create actions

New hook (`isCreateEnable`) have been added to allow dynamic business rules on the ability to create a new item of a dedicated object.

Contrary to rights this behaviour can be specialized to a particular instance of an object (panel instance in the generic web UI for instance).

### 3.2.3 Added grant class in Adobe FLEX(R) library and renamed package name

A new class `simplicite.core.Grant` has been added to Adobe FLEX(R) library to allow direct access to user and rights related data.

The existing package `com.simplicite` has been renamed to `simplicite.core` to comply with Adobe FLEX(R) standards and allow other sub packages (e.g. `simplicite.ui` for UI helpers) to be added in the future

## 3.3 Included in patch level 3

### 3.3.1 Additional field style syntax

It is now possible to indicate that a field CSS style is to be appended to default context style, to do so simply add a "+" before the style (e.g. "+red").

### 3.3.2 Specific queries APIs with integer result

APIs have been added to grant class to allow specific queries with a single result directly parsed into a `long` value : `Grant.simpleQueryAsLong(...)`. These APIs are convenient for `count(*)` queries for instance.

### 3.3.3 Set style on value array for list contexts

APIs have been added to object class to allow specific field styles to be applied depending on the value of another field (which was already possible in a form context). These APIs are called in list contexts with the array of current row values as parameter instead of the current field single value.

An example of usage of this feature is in the core configuration on object fields : a specific style (light red background by default) is now applied on panel lists for functional key object fields

### 3.3.4 Map tag in form templates

It is now possible to put map tags in form templates when a place map is configured for considered object. The syntax of this tag is as follows:

```
[MAP:<place map name>[:<width>[:<height>[:<text code>]]]]
```

### 3.3.5 Specific SQL additional filter on fields

To avoid common misunderstanding on the usage of the `ObjectField.get/setSearchSpec()` methods which **are not supposed** to be used in specific code (as the field search specification it is only the generic SQL translation of field filters), the `ObjectField.get/setAdditionalSearchSpec()` have been introduced to allow specific SQL statement to be added to generic field search specification.

If the field is corresponds to a physical column and if filter is not empty, this SQL statement is added to generic SQL translated from filter value, in that case, this SQL statement **must** start with `and` or `or`.

If the field does not correspond to a physical column or if the filter is empty (which can be forced using the `setFilter` API), this SQL statement is directly applied (it is then roughly equivalent to adding some specific SQL in the main object search specification) and **must not** start with `and` or `or`.

A typical usage is to allow searching into child objects of an object (e.g. searching a customer from an invoice number when a customer can have multiple invoices) using a `exists(..)` SQL syntax and a non persistent field.

Another typical usage is to add advanced search filtering based on SQL query such as using `in (select ...)` statements.

### 3.3.6 External file adapters

It is now possible to reference an external file for script adapters (BSH and AWK) setting the script field value as `FILE:<file path>`

File path can be absolute or relative (base path is then `<application doc folder>/import/adapter`)

### 3.3.7 Web zones as home page component

It is now possible to add a web zone into authenticated home page of the generic web UI using an "External page" item with the following URL pattern : `ALL_webzone.jsp?zone=<code of zone type, e.g. EXTRA>&order=<web zone order>`

---

### 3.3.8 Internal SOAP access

It is now possible to use SOAP object service within the web generic UI, using following URLs :  
`ALL_wsdl.jsp?object=<Object name>` for WSDL and `ALL_soap.jsp?object=<Object name>` for SOAP services

### 3.3.9 Reference field for parent object context

Panel object now have access to the reference field used by the considered link using the API `getParentRefField()`.

This solved a limitation in the way the platform was appending specific cross joins statements to complex (e.g. virtual) links in the case where there are several links between same objects.

## 4 Major bug fixes

### 4.1 Included in patch level 1

#### 4.1.1 Document deletion

Now it is not possible to delete the document attachment in the popup when a document field is configured as required in the object.

#### 4.1.2 Email addresses emptiness checks

The core email APIs were only testing whether email addresses were not null, but did not test whether these addresses were not empty strings (which is the case in some internal platform usages of these APIs), this has been fixed.

#### 4.1.3 Log event reloading and enabled flag

The reloading (using the dedicated action) of log events was not working properly (the only way to reload properly log events was to clear the cache which is not applicable in all cases). This now works correctly.

The handling of the enabled/disabled flag of log events was not correct. If a log event was disabled it was considered as an unknown log event and thus generated a plain STDOUT log trace. This is now correctly handled, disabled events does not generate any log trace anymore.

### 4.2 Included in patch level 2

#### 4.2.1 Top railway refresh

The `Navigator` has been fixed to refresh the railway during navigation.

#### 4.2.2 Referred field in search filters in JSON/XSD

Referred foreign fields were not taken into account correctly in search filters applied by APIs based on JSON and XSD formats (this was due to a change in the HTTP toolbox).

#### 4.2.3 JAVA custom actions in panels of generic web UI

When fired from a panel list in the generic web UI, JAVA custom actions where redirecting to main list instead of displaying action result within panel.

#### 4.2.4 Cartesian product in group cache loading

A Cartesian product on the request loading group cache has been fixed. This caused slowdowns of application start-ups and cache resets in case of high number of groups and/or users.

### 4.3 Included in patch level 3

#### 4.3.1 Link to select box in search pages

Rights were not checked when proposing select buttons on generic web UI search pages, this resulted in a right error page in select popup for non granted objects. Now rights are checked and no select button is shown if considered object is not granted.

#### 4.3.2 Reset search orders in search pages

Generic UI web search pages were not resetting default search orders but instead were setting order as blank.

#### 4.3.3 Link mapping not applied after pagination in select popups

Select popup were not applying link mappings after first pagination in the selection list.

#### **4.3.4 Auto selection after pagination in select popups**

Select popup were not resetting page to 0 at opening and were auto selecting item in paginated lists with only one item, resulting in blocking issue with popup list paginated to the last page with only on item in...